



Step by Step Guide – What to do if you think you have seen or found a marine pest

1. Photograph it

- ✓ Use object for scale – ruler, coin, thumb.
- ✓ Photograph entire sample undisturbed and include surroundings.
- ✓ Photograph sample close up.
- ✓ Use a neutral non-reflective background.

2. Record it

- ✓ Location
- ✓ Season (*hot season, cool weather time*).
- ✓ Name and contact.
- ✓ Size – use object for scale.
- ✓ Colour.
- ✓ Water depth you found it at.
- ✓ Environment (*beach, sand, rock pools, in weed, on water*)
- ✓ GPS reading if possible.

3. Collect it

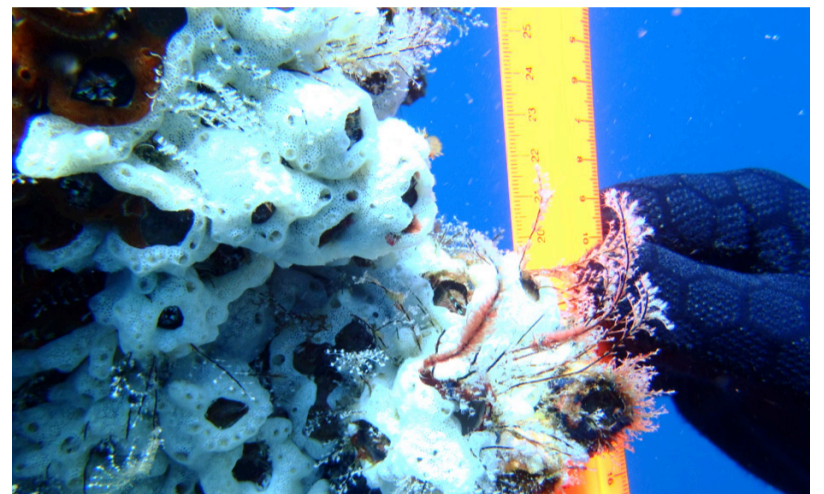
- ✓ Carefully collect sample or samples.
- ✓ Collect samples of different sizes.
- ✓ Store in zip-lock plastic bag or plastic container.
- ✓ Complete label with a pencil (*date, ranger name, location, other records*).
- ✓ Place sample in an eski or fridge. DO NOT FREEZE.

4. Report it

- ✓ **FISHWATCH** – 1800 815 507, if samples have been collected.

Otherwise contact:

- ✓ **WA PestWatch** – download from App Store or Google play store, OR
- ✓ **Fisheries Biosecurity section** – (08) 9482 7333
biosecurity@fish.wa.gov.au, OR
- ✓ **Local Fisheries office:**
Fremantle (08) 9432 8000
Hilarys (08) 9203 0110



**WESTERN AUSTRALIAN FISHERIES
& MARINE RESEARCH LABORATORIES**

Date 8 / 5 / 2014 Vessel..... Time 11:30.....

LOCATION Barrow Island WA

DEPTH 3m COLLECTOR Brad Tilley

METH. OF CAPTURE diving / scrape

NOTES Suspect Asian green mussel 20°29'152" pylon
115°20'720"

